



## Unlock the power of *connected care*

Cardiovascular disease is one of your company's biggest health care cost drivers. Connecting your employees' medical plans with their dental, vision and disability plans can help control costs and improve their quality of life.

### The impact of cardiovascular disease

Cardiovascular disease – conditions that affect the heart and blood vessels – dramatically change the quality of life for your employees and their families. And there's also the financial burden for families and for society at large:



**Cardiovascular diseases include** coronary artery disease, heart attack, abnormal heart rhythms, heart failure, heart valve disease, congenital heart disease, heart muscle disease, pericarditis, aorta disease and vascular disease.

### Improving health through *better connections*

Anthem Whole Health Connection<sup>®</sup> is about whole-person health. It makes connections between the medical plan and dental, vision and disability plans, so doctors and care managers have a more complete view of each employee's health. This means:

- Doctors can catch and treat problems earlier and close gaps in care.
- Employees are more engaged with their care providers.
- Care is better because everyone is on the same page.

**The result? Better health outcomes, lower costs and a better care experience.**

At no additional cost to employers, Anthem Whole Health Connection drives cost savings. The more benefits that are integrated, the more complete the view and the savings will be.



### The dental and cardiovascular disease connection



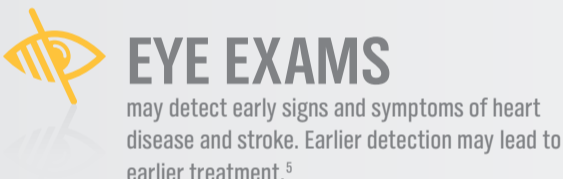
### The Anthem Whole Health Connection

We give our members with cardiovascular disease **extra dental support** by automatically enrolling them in extra services like cleanings and exams.<sup>3</sup>

Patients with coronary artery disease who treat their gum disease have:

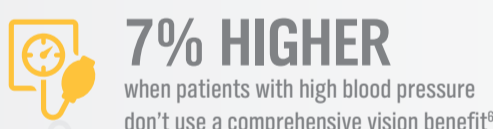


### The vision and cardiovascular disease connection

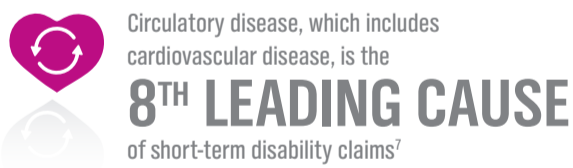


### The Anthem Whole Health Connection

During a routine eye exam, an eye doctor may be the first to detect cardiovascular disease. When vision and medical plans are connected, vision claims that identify cardiovascular disease may trigger a referral to Anthem Care Management. This early intervention helps your employees get the care they need sooner – often resulting in better outcomes.



### The disability and cardiovascular disease connection



### The Anthem Whole Health Connection

Our disability case managers and nurse care managers work together to create stay-at-work or return-to-work programs to fit each employee's unique needs. Disability claims for employees with cardiovascular disease may trigger a referral to Anthem Care Management for more support.



### The connections make a difference

Care alerts and clinical communications to members, doctors and care managers make a big impact, closing gaps in care and helping employees return to work sooner:



## Anthem Whole Health Connection Better health. Lower costs. Better member experience.

To learn more, talk to your producer or Anthem representative or visit us at [specialtybenefits.info/integratedhealthcare](http://specialtybenefits.info/integratedhealthcare).

1 CDC Foundation: Heart Disease and Stroke Cost America Nearly \$1 Billion a Day in Medical Costs, Lost Productivity (April 29, 2015): cdcfoundation.org.  
2 American Heart Association: Bad Tooth-brushing Habits Tied to Higher Heart Risk (November 7, 2018): heart.org.  
3 Additional services are provided to Essential Choice and Consumer Choice PPO members who are actively engaged in an Anthem Care Management program for the following conditions: cardiovascular disease, pregnancy, heart conditions, stroke, organ or bone marrow transplant, cancer treated with chemotherapy, head or neck cancer treated with chemotherapy and/or radiation, suppressed immune system (HIV/AIDS) and end-stage renal disease (kidney disease). These services don't apply to Affordable Care Act or dental HMO plans.  
4 Jeffcoat MK et al., "Impact of Periodontal Therapy on General Health: Evidence from Insurance Data for Five Systemic Conditions," American Journal of Preventive Medicine 47, no. 2 (August 2014): ncbi.nlm.nih.gov/pubmed/24953519.  
5 UChicago Medicine: What Can Your Eyes Tell You About Heart Disease? (April 27, 2018): uchicagomedicine.org.  
6 American Optometric Association: AOA, Safeway Discuss Benefits of Integrated Eye Care (May 16, 2014): aoa.org.  
7 Integrated Benefits Institute, 2017 claims.  
8 All conditions, not just cardiovascular disease. Anthem and its affiliated companies, Productivity Solutions Quantifying Value Study, 2015.  
9 Anthem Internal data, 2018.  
10 All conditions, not just cardiovascular disease. Anthem and its affiliated companies data, 2018.