



Make an impact on your highest health costs with your ancillary plans



CANCER
4,830
new cases
diagnosed daily at
an annual cost of
\$80.2 billion^{1,2}



**CARDIOVASCULAR
DISEASE**
1 in 6
U.S. health care
dollars is spent on
cardiovascular disease³



DIABETES
\$90B
a year in lost
productivity as a
result of diabetes⁴



PREGNANCY
\$5.7B
in lost work and
pay associated with
preterm births⁵



MUSCULOSKELETAL
#1
cause of disability and
highest health care cost⁶

Anthem Whole Health Connection[®]

Connecting medical and ancillary plans such as dental, vision and disability like no other carrier for better health, lower costs and a better member experience. All at no extra cost. Our health care professionals see a complete view of a member's health and proactively engage with them via care alerts, automatic referrals and face-to-face in order to close gaps in care and improve outcomes.

Our unique and proven process:

1

We create a comprehensive and more complete health profile for each member by connecting medical with ancillary data

2

We combine that data with superior analytics and risk-scoring tools to create actionable insights

3

We proactively share those insights with health care professionals to deliver connected care

¹cancerstatisticscenter.cancer.org

²cancer.org/cancer/cancerbasics/economic-impact-of-cancer

³cdcfoundation.org/pr/2015/heart-disease-and-stroke-cost-america-nearly-1-billion-day-medical-costs-lost-productivity

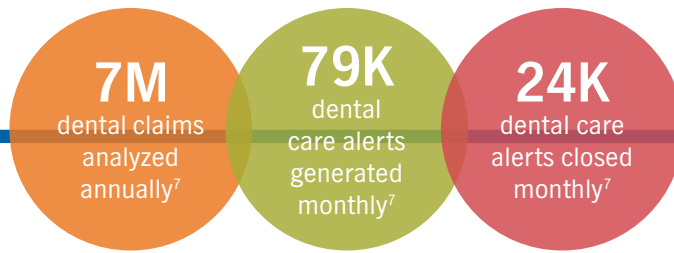
⁴cdc.gov/chronicdisease/resources/publications/aag/diabetes.htm

⁵ncbi.nlm.nih.gov/books/NBK11358

⁶Fact Sheet, boneandjointburden.org



Dental+Medical OPPORTUNITIES



CANCER



1/3 of people treated for cancer develop complications that affect the mouth⁸

RESULTS

60% lower treatment costs estimated for oral cancer treated in the earliest stages than those at an advanced stage of the disease⁹

CARDIOVASCULAR DISEASE



Research has linked **periodontal disease** with the risk of coronary artery disease and stroke¹⁰

RESULTS

40.9% and **10.7%** lower medical costs for patients with vascular and coronary artery disease who treat their periodontal disease¹¹

DIABETES



Infections, including gum disease, may cause **blood sugar** to rise¹²

RESULTS

39% fewer hospital admissions and **40.2%** lower medical costs for patients with diabetes who treat their periodontal disease¹³

PREGNANCY



Pregnancy causes hormonal changes that increase the risk of developing gum disease, which can affect the health of a developing baby

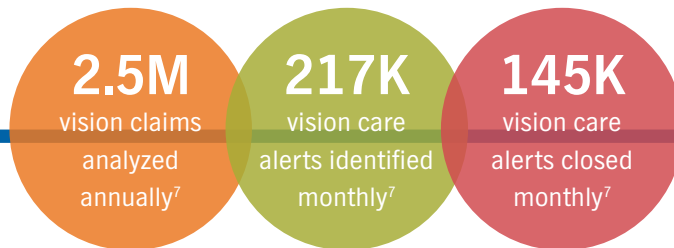
RESULTS

Up to **73%** lower medical costs for pregnant patients who treat their periodontal disease¹³

30% fewer emergency room visits, **25%** less time in the NICU and **15%** savings as a result of the Future Moms program¹⁴



Vision+Medical OPPORTUNITIES



CANCER



3,360 new cancers of the eye and orbit will be diagnosed this year¹⁵

RESULTS

The eye and its surrounding tissues are one of the most common areas of the body where **skin cancer** is first diagnosed¹⁶

CARDIOVASCULAR DISEASE



Eye exams may be the first indicator of predisposing factors for **heart disease and stroke**

RESULTS

15% lower cardiovascular costs and **7%** lower hypertension costs for diabetes patients with comprehensive vision¹⁷

DIABETES



Eye exams may be the first indicator that a member has **diabetes** or a diabetes-related eye disease

RESULTS

20% lower medical costs for diabetes patients with comprehensive vision¹⁷



Disability+Medical OPPORTUNITIES

Anthem disability
and medical
receives

35%
received
before first day
absent¹⁸

40%
of claims
received before
end of first
week¹⁸

CANCER



Malignant neoplasms are the sixth leading cause of short-term disability claims¹⁹

CARDIOVASCULAR DISEASE



Circulatory diseases are the eighth leading cause of short-term disability claims¹⁹

DIABETES



90% of disabilities are caused by illnesses rather than accidents²⁰

PREGNANCY



Pregnancy and complications of pregnancy are the leading cause of short-term disability claims¹⁹

MUSCULOSKELETAL



Musculoskeletal is the second leading cause of short-term disability claims¹⁹

RESULTS

Connecting disability and medical plans allows nurse care managers and disability case managers to collaborate and develop a plan to help members receive **the care, support and resources they need in order to stay at work or return at the appropriate time.**

Medical costs associated with a disability claim were **25%** less for members who engaged with a medical nurse care manager following referral from disability case manager¹⁸

⁷Anthem 2018 Data

⁸nidcr.nih.gov/OralHealth/Topics/CancerTreatment/

⁹sharedentalcare.com/early-detection-of-oral-cancer

¹⁰ada.org/~media/ADA/Member%20Center/Files/Perio_heart.pdf?la=en

¹¹American Journal of Preventive Medicine's Impact of Periodontal Therapy on General Health Study, June 2014

¹²mouthhealthy.org/en/az-topics/d/diabetes

¹³American Journal of Preventive Medicine's Impact of Periodontal Therapy on General Health Study, June 2014, [ajpmonline.org/article/S0749-3797\(14\)00153-6/abstract](https://ajpmonline.org/article/S0749-3797(14)00153-6/abstract)

¹⁴Anthem Internal Health and Wellness Solutions Data Study and Actuarial Validation, 2009

¹⁵cancer.org/cancer/eye-cancer/about/key-statistics.html

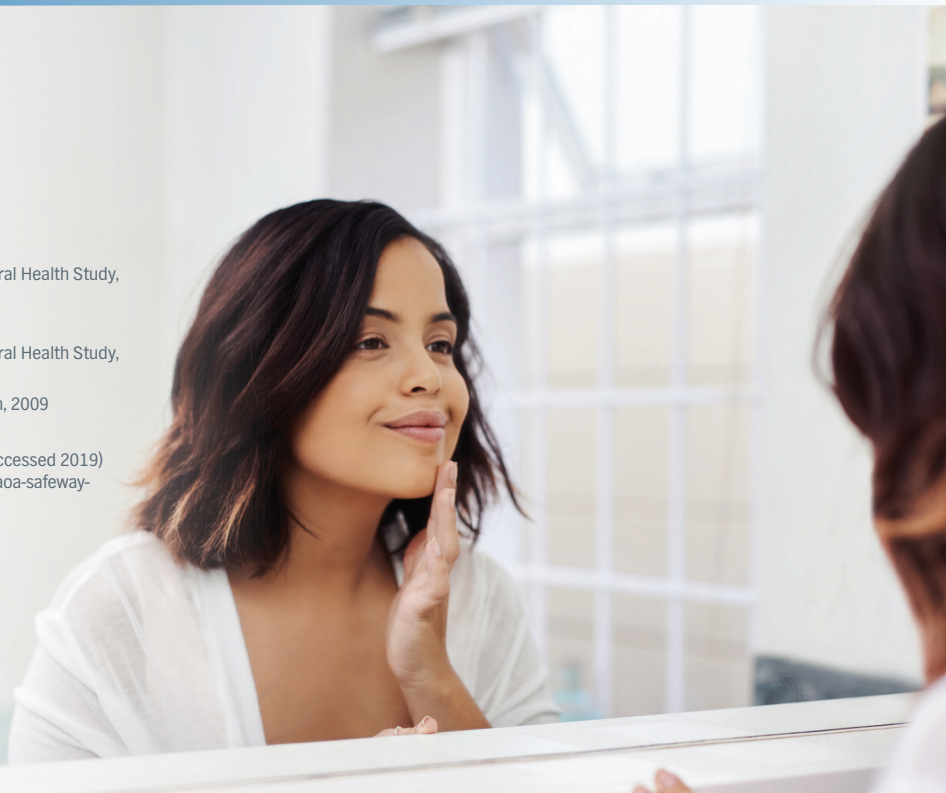
¹⁶Detecting and Preventing Eyelid Skin Cancers, The Skin Cancer Foundation (last accessed 2019)

¹⁷American Optometrists Association (AOA), Safeway, Inc. aoa.org/news/advocacy/aoa-safeway-discuss-benefits-of-integrated-eye-care-?sso=y

¹⁸Anthem Productivity Solutions Quantifying Value Study, 2015

¹⁹Integrated Benefits Institute (IBI), review of 2017 claims

²⁰Council for Disability Awareness, Chances of a Disability, 2012 disabilitycanhappen.org/chances_disability/





Unlock the power of connected care today with Anthem.

To learn more about Anthem Whole Health Connection, visit [anthem.com/specialty](https://www.anthem.com/specialty)
or contact your producer or Anthem plan representative.



Anthem Blue Cross is the trade name of Blue Cross of California. Anthem Blue Cross and Anthem Blue Cross Life and Health Insurance Company are independent licensees of the Blue Cross Association.
ANTHEM is a registered trademark of Anthem Insurance Companies, Inc.